

## EM150S24AC -b

### Magnetic Triac Dimmable LED AC Driver

Outdoor Black Powder Coated Steel Enclosure

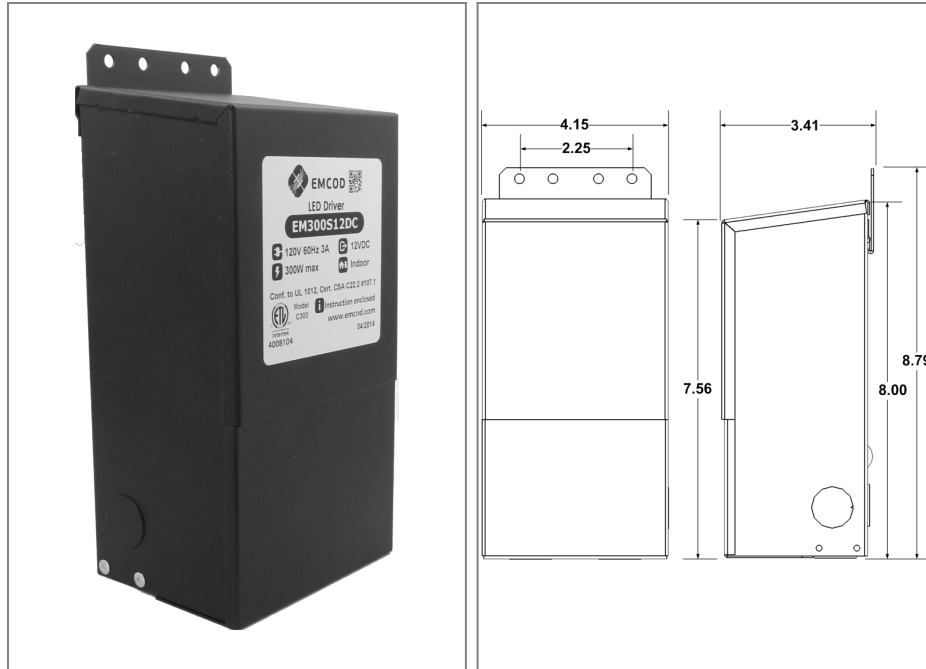
Single Circuit: **24VAC**

Total Wattage: **150W max**

Input Voltage: **120V 60Hz**



Conforms to UL STD. 2108  
Certified to CSA  
STD. C22.2 № 250.0  
model EM150  
[Link to certification](#)



### Transformer

PWM output. Dimmable with any ELV, MLV, CL, forward or reverse phase.

Temperature class B(130°C)

Two section bobbin completely separated primary and secondary windings

Input leads are 18AWG 600V

Output leads are 12AWG 300V

Leads max. operational temperature is 105°C

Thermal manually reset primary breaker 3A

Thermal manually reset secondary breaker 10A

### Housing

The actual transformer 150W is encapsulated in the enclosure

The enclosure is Black Powder Coated Steel, Dry, Damp and Wet Location rated

Wiring compartment has 6 knockouts sizes for 3/8 inch screw cable connectors

Enclosure Temperature does not exceed 75°C at 45°C ambient and fully loaded

Dimensions (inch): H = 8.79, W = 4.15, D = 3.14

Weight (LBs): 8

### Electrical Parameters

Input Voltage: **120V 60Hz**

Max. input current at full load: **1.4A**

Output voltage without load: **25.6VAC**

Output voltage fully loaded: **23.8VAC**

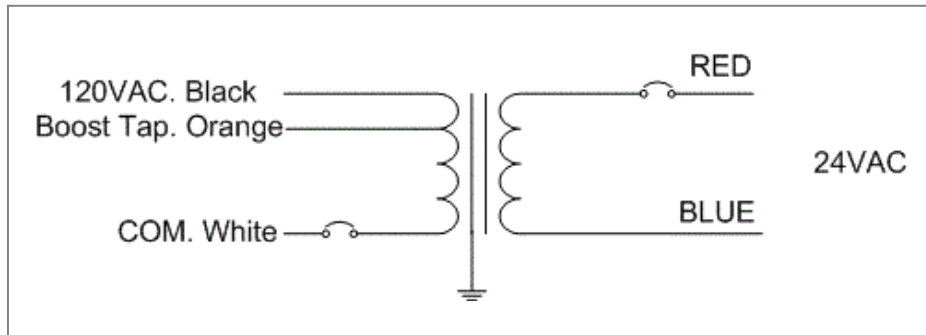
Max. Total Wattage: **150W**

Max. Output Current: **6.2A**

Efficiency: **90%**

Load regulation: **0%**

Ripple: **0%**



**Mailing Address: 646 Flinn Ave. Unit B, Moorpark , CA 93021 Tech support: Arik Nirenberg phone: 818-904-3309**  
**Fax: 818 904 3327 [info@emcod.com](mailto:info@emcod.com) techsupport@emcod.com**